



***Lely Consumables and wear parts***  
*Product Catalogue*

[www.lely.com](http://www.lely.com)





*'I stand behind  
my product and  
next to the customer.'*

As a Consumables advisor, I want to understand the wishes and goals of the farmer. Because what is better than thinking with the farmer and advising him or her on these so that they are ultimately realised? In the end, it is not about what I sell. What matters is the result of the product sold. We all have the same goal: a satisfied Lely milker. And I am only satisfied when the farmer is satisfied. Together we achieve more.

**Frank Tiebie**  
Account Manager Lely Center in Maassluis,  
The Netherlands

## *We share the care*

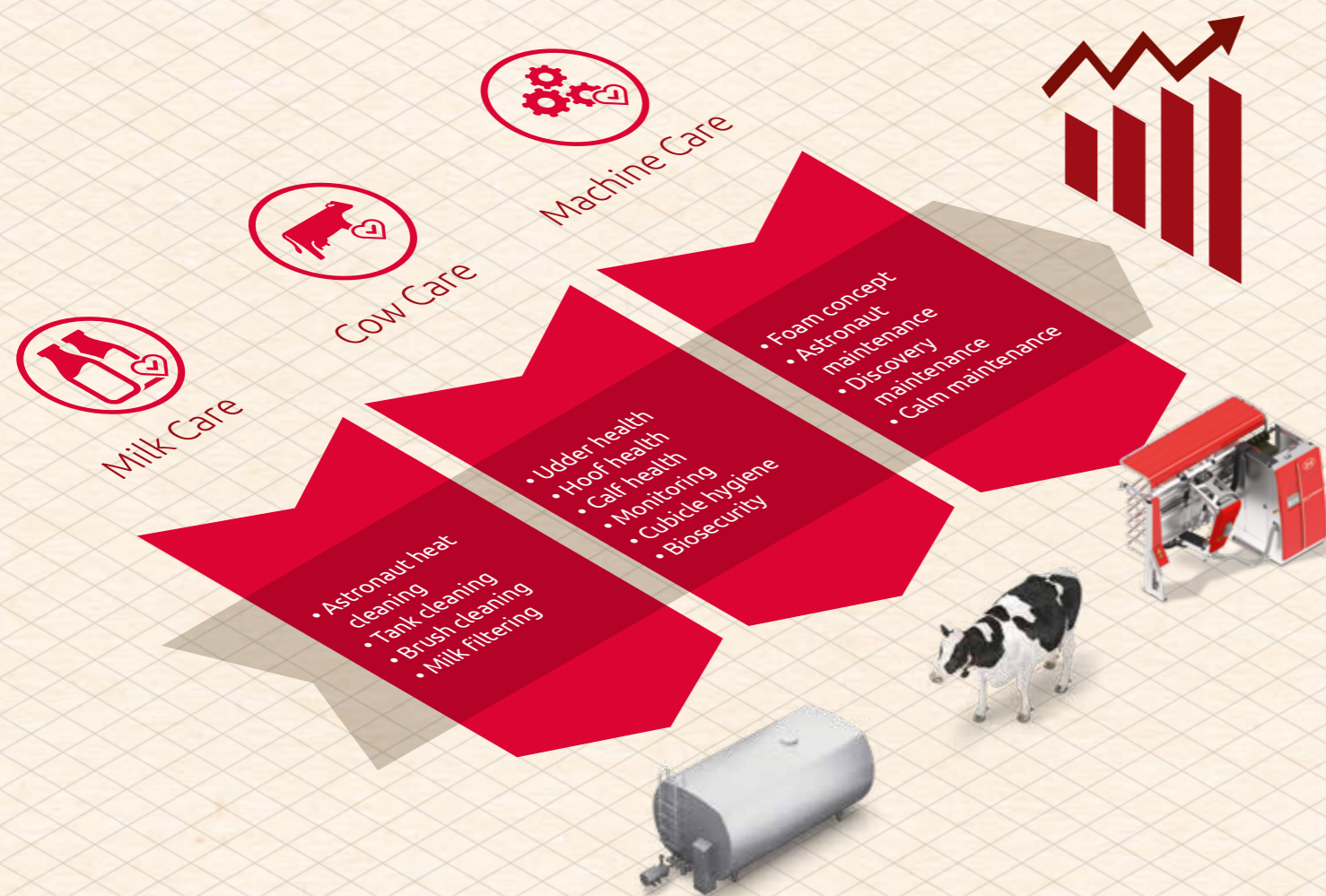
It is all about adequate attention and care. Through optimal care for your Lely equipment, cows and milk, you not only increase profitability, but also pleasure in your work. Lely supports you in this with a comprehensive customised consumables and original wear parts portfolio.

We offer complete solutions that consist of more than just innovative machines. But also include technical support, Farm Management advice and the means to use these machines for years with peace of mind.

Lely delivers practically everything you need on a daily basis. Together we keep the cows and the machines in shape, while working on a tank full of quality milk. In this way, we work together with you on a dairy farm where work is done in a sustainable, pleasant and profitable manner.

***For this, you can rely on a complete offer for; Milk Care, Cow Care and Machine Care.***





*Optimal care  
for optimum results*

## Table of contents



### **1. Milk Care - a full tank of quality milk**

1.1 Astronaut heat cleaning	7
1.2 Tank cleaning	8
1.3 Brush cleaning	10
1.4 Milk filtering	11
1.5 Accessories	11



### **2. Cow Care - healthy cows for a healthy business**

2.1 Udder health	12
2.2 Hoof health	16
2.3 Cubicle hygiene	22
2.4 Monitoring	23
2.5 Calf health	24
2.6 Biosecurity	25



### **3. Machine Care - 100% uptime with your Lely**

3.1 Foam concept	26
3.2 Astronaut maintenance	29
3.3 Discovery maintenance	33
3.4 Calm maintenance	34

### **4. We also have**

36



# A full tank of quality milk

Milk that leaves the udder cleanly also needs to enter the tank cleanly. In order for this to happen there needs to be hygienic cleaning throughout every link of the process. Lely helps you with its fully automated cleaning programmes and with consumables specially developed for the Lely milking robot. They give optimal cleaning results and have been designed for safe use with the robot. Much like yourself, Lely aims for 100% cleanliness.

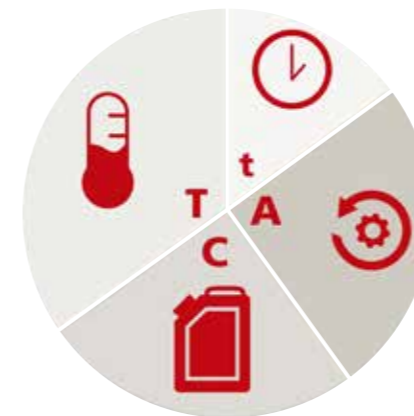


## 1. Milk Care



### 1.1 LELY ASTRONAUT HEAT CLEANING

Internal hygiene is essential for producing high-quality milk and for the lifetime of your Lely Astronaut milking robot. The milking robot has a unique heat-cleaning system for fast and effective cleaning. Together with the Lely Astri cleaning range, the hygiene of your robot and your milking process is maintained. The Lely Astri range complies with food-safety regulations and the required specifications for the Lely Astronaut.



The tACT principle includes four aspects that must be in balance for effective cleaning

**t - Short time:** More milking time thanks to a short cleaning process, short cleaning process by using trough flow cleaning

**A - Action:** Whirling cleaning by using the right combination of air and cleaning fluid

**C - Proven chemical product (Astri):** Specifically developed for heat cleaning, concentrated product with a high cleaning capacity

**T - High temperature (>77 degrees at MQC):**

For shorter cleaning times, extra disinfection guarantees, optimal usage of water and Astri product.

### Lely Astri Lin

Alkaline cleaner for the Lely Astronaut milking robot

- To be used in combination with Lely Astri Cid
- Optimal cleaning properties for fat and protein residues
- Non-foaming chlorine free alkaline cleaner for the Lely Astronaut milking robot
- Powerful cleaning agent without harming the materials of the Lely Astronaut milking robot



### Lely Astri Cid

Acid cleaner for the Lely Astronaut milking robot

- To be used in combination with Lely Astri Lin
- Optimal cleaning properties for mineral and other inorganic deposits
- Non-foaming acid cleaner for the Lely Astronaut milking robot
- Powerful cleaning agent without harming the materials of the Lely Astronaut milking robot



## 1.2 TANK CLEANING

Lely offers various solutions for cleaning the milk tank. Depending on the technical specifications of the milking installation, it is up to the farmer to make a choice. Considerations include: the environment, organic livestock farming, the technical possibilities and the requirements imposed by local authorities/your milk processor.

### Lely Frigus Lin

Alkaline detergent for the milk tank

- To be used in combination with Lely Frigus Cid
- Chlorinated alkaline cleaner and disinfecting agent for the milk tank
- Effective removal and dispersion of milk residues (fat and protein) in circulation cleaning of the milk tank



### Lely Frigus Cid

Acid detergent the milk tank

- To be used in combination with Lely Frigus Lin
- Acid cleaner for effective removal of mineral deposits
- Effective removal of multiple mineral deposits such as lime scale, iron deposits and milkstone in circulation cleaning of the milk tank



### Reca Duo A

Alkaline non-chlorinated detergent for the milk tank

- To be used in the chlorine-free tank cleaning concept in combination with Reca Duo S
- Non-chlorinated alkaline cleaner for alternating cleaning of the milk tank by circulation
- Sophisticated cleaner for removal of organic residues (main) combined with some inorganic cleaning properties



### Reca Duo S

Acid detergent for the milk tank

- To be used in combination with the chlorine-free Reca Duo A
- Acid cleaner for alternating cleaning of the milk tank by circulation
- Sophisticated cleaner for removal of inorganic residues (main) combined with organic cleaning properties

### Alkaline detergent

	Reca Duo A	Lely Frigus Lin
Disinfection component (chlorine) present	No	Yes
Cleaning power with organic contaminants (milk residue, fat, protein)	++	++
Chloroform in milk	No	Risk present
Chlorine vapours	None	Risk present
Cleaning temperature	50-70 °C	50-70 °C
Disinfectant effect	+ in combination with temperature	+++
Load on the environment	<	>
Organic livestock farming	Yes	Not always allowed*
Changeover cleaning alkaline alternated with acidic	Alternate alkaline acidic-alkaline acidic	Periodical alkaline-alkaline-acidic-alkaline
Stabilization of water hardness	+++	+

\*Criteria for organic livestock farming can differ per country.

### Acid detergent

	Reca Duo S	Lely Frigus Cid
Cleaning component	Phosphoric acid	Mixture of acids
Cleaning power with inorganic contamination (milkstone, lime, iron deposits)	++	+++
Cleaning power with organic contamination (milk residue, fat, protein)	++	+
Phosphate free	No	No
Disinfectant effect	++ in combination with temperature	+

*Acid as well as alkaline cleaning is needed to achieve optimal results. For tank cleaning, this can be done with or without chlorine.*





## Test strips for Lely Astronaut brush cleaning

Test strips for Lely Astronaut brush cleaning can be used to provide an easy and quick indication whether concentration of the brush cleaning product applied on the pretreatment brushes is sufficient. To indicate the concentration of brush cleaner, the Test strips measures the component peracetic acid, which is the main active ingredient in the Lely Astronaut pretreatment brush cleaning range.

- Quick and easy indication of concentration brush cleaning detergent
- No special storage requirements
- Direct measurement, no dilution required



## 1.3 BRUSH CLEANING

Optimal hygiene and cross-contamination should not be underestimated with regards to the effect on milk quality. The cleanliness of the stimulation and cleaning brushes on your Lely Astronaut milking robot plays a crucial role in this. Lely Astri L is a product that has been developed for fast and effective cleaning with no harmful effects on udder health.



### Lely Astri L

Liquid disinfectant for the pretreatment brushes of the Astronaut milking robot

- Highly effective at all temperatures
- Cleaning and disinfecting the pretreatment brushes incorporated in one product
- In recommended concentration safe for cow and environment

## 1.4 MILK FILTERING

Milk filters are an important link in a hygienically clean milking process. They filter any contamination out the milk that comes from the milking robot. It is important to replace these filters in good time to ensure that they function correctly. Lely recommends doing this three times a day.

### Lely Astronaut milk filters

- Filtration for all sorts of dirt
- Available in different sizes and filtration density
- Stored hygienically in Lely filter dispenser

We also have a filter dispenser available, check page 37.



## 1.5 ACCESSORIES

### Chemical spill pallet & storage cabinet

Safely storing chemicals

- Safe and compliant storage of chemicals
- Safe and easy separating acid and alkaline due to matching colors
- Long life time due to corrosion free material

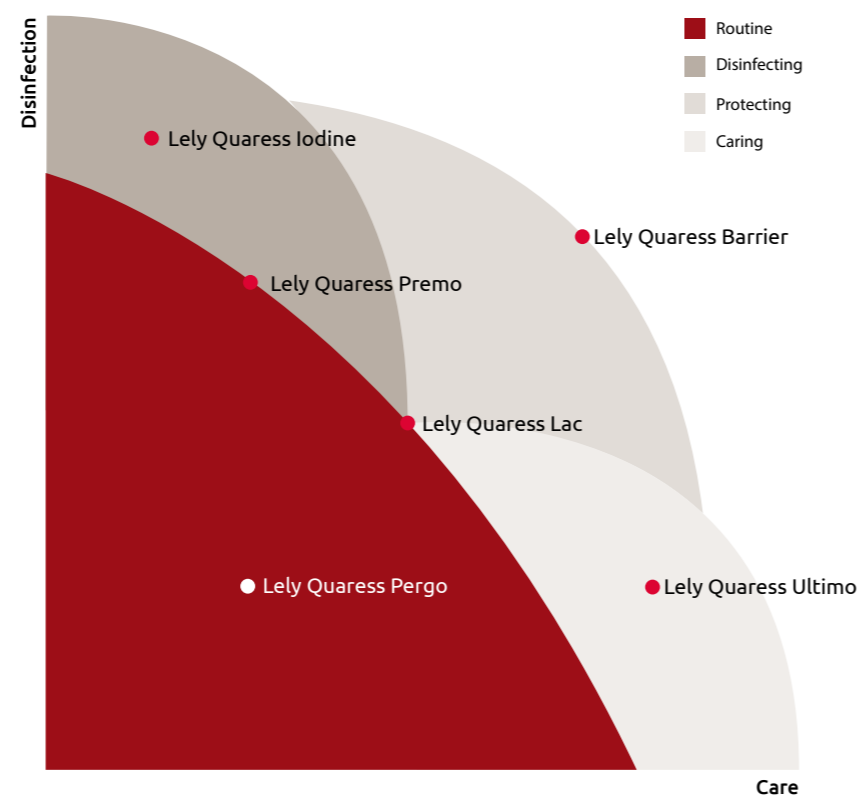


# Healthy cows for a healthy business

Healthy cows are essential for farm business management. Hygiene plays an important role in this from calf to cow. Premature culling is having a huge effect on productivity and longevity of dairy cows. Two main contributing factors to premature culling are udder health and hoof health problems, with udder health being the most serious.

## 2.1 UDDER HEALTH

Udder health and milk quality are closely related. The use of adequate udder care products reduces the risk of various health related issues, such as an increase in somatic cell count or udder inflammation. By taking care of udder health, you ensure that cows can use their energy efficiently for producing good quality milk.



## 2. Cow Care

### Lely Quaress Barrier

Protective barrier udder care product

Lely Quaress Barrier is a ready-to-use udder care product applicable in the Lely Astronaut milking robot. The product is based on povidone-iodine, seals off the teat end from the environment with a physical protective layer. This disables microorganisms entering the udder. The protective layer acts like a breathing and caring second skin. Ideal for use in dairy farms where the challenging environmental conditions asks for well protected udders.

- Long term protection by sealing off teat end
- Long lasting and still easy to remove barrier by the Lely brush concept
- Unique sprayable barrier product for the Lely Astronaut milking robot



### Lely Quaress Ultimo

Udder care product for recovery

Based on povidone-iodine, it actively controls udder care. With a very gentle and caring effect on the skin, Lely Quaress Ultimo returns the teats to perfect condition time and again. Ideal for use in the months when skin condition is adversely affected by the weather.

- Ensures healthy and easy-to-clean teats
- Its film-like properties ensure that it is long lasting
- Focuses on conditioning the skin in challenging weather conditions

### Lely Quaress Premo

Strong disinfectant udder care product

Based on povidone-iodine, it immediately destroys contagious bacteria. And in particular, environmental bacteria. Highly suitable for dairy farms where the preference is for rapid disinfection.

- Strong and broad disinfection properties
- High focus on environmental bacterial pressure
- Povidone (PVP) iodine is well known in human medical applications







### Lely Quaress Lac

Udder care product for skin harmony

Based on the natural ingredient lactic acid. It kills both contagious bacteria and environmental bacteria. Combined with a very mild and caring effect on the skin, this product is perfect for dairy farms that aim to continuously control udder care.

- Reconditions the natural resistance of the skin
- For a dairy farm in need of extra udder health support
- LSA complex for disinfecting, softening and anti-aging of the skin

### Lely Quaress Iodine

Corrective udder care product with iodine

Based on iodine. It immediately kills contagious bacteria and, in particular, environmental bacteria. Due to the high concentration of 5,000 ppm, it is highly suitable for dairy farms which need to intervene immediately in udder health.

- Very strong disinfecting action
- Broad efficacy spectrum
- Quick acting iodophor



### Lely Quaress Pergo

Maintains a healthy udder

Lactic acid based product that has both bactericidal and yeasticidal characteristics. The product works effectively against contagious but also environmental bacteria. Next to good disinfecting properties the product contains surfactants as well as glycerin, which is a good moisturizer. This combination results in disinfection, softening the skin and ultimately support of natural resistance. Sufficient for farms where udder health is well under control.

- All-round udder health product
- Suppleness and moisture retention of the skin
- Surfactants increase disinfection efficacy of lactic acid

### Lely Quaress Balm

Caring udder balm with mint oil

- Cooling and soothing effect on the udder
- Quick absorption by the skin
- Stimulates blood circulation



*“Our mastitis  
has reduced by  
10 to 20 percent.”*

*Bert Mensink, The Netherlands*



## 2.2 HOOF HEALTH

Attention to hoof health pays off. Not just because it contributes to higher milk yields, but also because hoof problems are still the third main reason for culling dairy cows. Next to that, cows with healthy hooves are more productive and require less attention. Lely chooses the most natural way of milking where the cows go to the robot and feed fence at their own accord, it is thus essential that they can walk without any hinder. To ensure hoof health for the entire herd, Lely introduced the Lely Meteor hoof health approach.

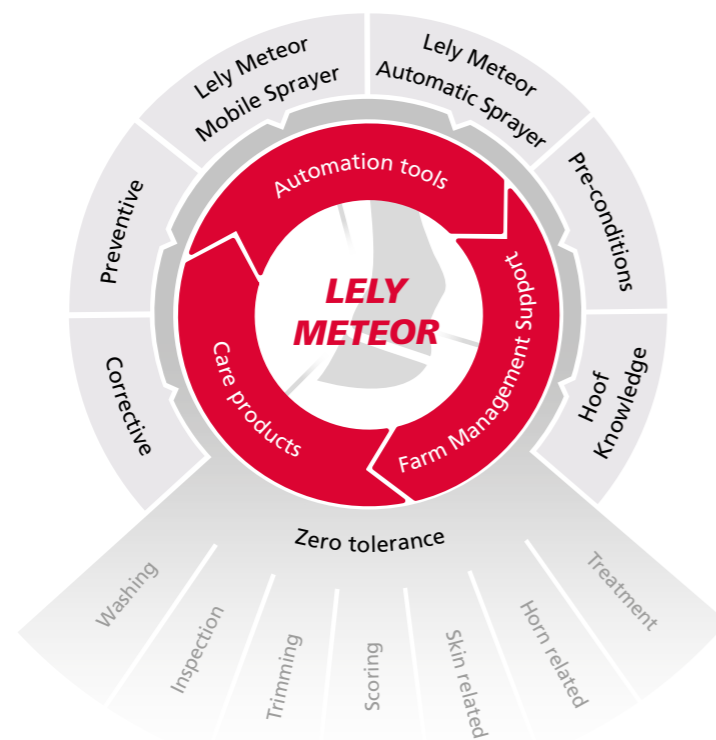
### Lely Meteor hoof health approach

Lely Meteor is a hoof health approach for dairy farms that aims on improving hoof health in a sustainable, animal-friendly and safe manner. Lely Meteor consists of three pillars; Farm Management Support advice, specific tools and care products. The right balance between these three pillars in combination with a zero-tolerance policy will have optimal effect. The hoof health approach extends across the entire farm and includes dairy cattle, dry stock and young stock. This reduces the infection pressure on the entire farm and is positive for the welfare of all animals.

### The focus is on:

- Preventively and routinely keeping the hoofs healthy.
- Direct individual treatment at the first signs of hoof health problems.

In addition, this approach pays attention to multiple factors that influence hoof health, such as floor and cubicle hygiene, ration, occupation and housing. After all, hoof health is a multifactorial condition. The Lely Meteor hoof health approach is a total solution that minimizes hoof diseases from A to Z.



### PREVENTIVE

## Lely Meteor Care Spray Plus

Disinfecting and caring agent for hooves within the Lely Meteor concept

- Part of the Lely Meteor approach and complementary to Lely Meteor Wash Spray
- Emphasis on disinfection of hoof health related pathogens
- Repeating character enables an ongoing reset of hooves hygiene



## Lely Meteor Wash Spray

Cleaning agent for hooves within the Lely Meteor concept

- Part of the Lely Meteor approach and applied prior to Lely Meteor Care Spray
- Enhances the effectiveness of Lely Meteor Care Spray
- Increases the cleaning power of water by breaking down the surface tension

*The Lely Meteor automatic sprayer preventively washes, cares and disinfects the hoofs every milking. This preventive measurement keeps the infection pressure low.*





## CORRECTIVE

## Lely Meteor Balm

### Caring hoof ointment

Lely Meteor Balm fulfils an important function in the individual treatment of the hoof skin. The abnormal skin is soaked loose, creating space for the underlying skin. This supports the natural recovery of the hoof skin. To ensure the caring effect of the balm for a longer time (several days), it is recommended to apply this together with the dry pads and bandage. Lely Meteor balm comes in a handy immediately usable packaging. Dosing with ease and without waste.

- Essential part of the zero tolerance approach in the Lely Meteor concept
- Intensive care of the skin allowing natural regeneration
- Composition assuring adherence, even on wet hooves, with minimum use



## Bandage for Lely Meteor

### Self-adhesive bandage

The Lely Meteor bandage protects the cleaned, and or treated skin, against manure and other dirt. This yellow self-adhesive bandage is long-lasting and breathable at the same time. Use in combination with the Lely Meteor pads and Balm.

- Long-term adhesion
- Breathable bandage
- Doesn't stick to skin or hair
- Keeps the hoof clean



## Dry pads for Lely Meteor

### Covering hoof pads

The Lely Meteor dry pads are used in combination with the Lely Meteor Balm and Lely Meteor Bandage. The dry pads create an environment in which the hooves are optimally protected. The outside of the pad is a moisture-resistant and water-repellent layer. The inside is soft (cotton-like), dirt absorbing and breathable. The pads are unique in shape and tailor-made for connecting a cattle hoof. Typical is the larger rear flap because the heel needs greater protection.

- Especially designed for cattle
- Keep liquids away from the hoof that is being treated
- Essential when using Lely Meteor Balm
- Reduces the pressure points



## Spreading plier

- Manufactured from unbreakably stainless steel
- Spreads the hoof toes with ease for proper inspection and treatment



## Hoof knives

- Hoof knife Aesculaap, appreciated by professional hoof trimmers for their high quality
- A guaranteed long lifespan



*“Zero tolerance, that’s what it’s all about. It’s the only way to really improve hoof health.”*

*Anneke Gouw, Farm Management Expert  
Lely International N.V.*



## Hoof blocks for Lely Meteor

Strong adhesion of the hoof block on dry hooves

- One-time treatment due to the strong adhesion of the hoof blocks on dry hooves
- Fast drying time
- Glue can be applied in thick layers



## Glue gun for Lely Meteor

Especially for applying the Lely Meteor glue

- Glue gun
- Especially for applying the Lely Meteor glue
- Use the gun together with the matching mixing tips

## Glue for Lely Meteor

Transparent adhesive

- Lely Meteor glue (200 ml)
- 2-component transparent adhesive with a pasty viscosity
- One-time treatment due to very strong adhesion on dry hoofs



## Mixer tips for Lely Meteor

Applying Lely Meteor glue

- 10 pieces of mixing tips
- Especially for applying Lely Meteor glue
- Easy to use



## Lely Meteor bandage kit

Convenient set after purchase of the Starter kit or the storage crate

Consists of:

- Bandage for Lely Meteor (12x 12 pieces)
- Dry pads for Lely Meteor (3x 50 pieces)
- 1x Lely Meteor Balm (20 pieces) and 2x Kenofix spray



You can order the Lely Treatmentbox via your local Lely Center





## 2.3 CUBICLE HYGIENE

Cows lie down for approximately 14 hours per day to rest and ruminate. While lying down, blood circulation through the udders, and therefore milk production, increase. Lely housing products ensure a clean and hygienic environment for your herd.

### Lely Comfort Care

Cubicle hygiene product

- Fast moisture (re)absorption
- Does not dry out the teat skin, pH neutral
- Stimulates rest and productivity of the cow
- Release of essential oils create unfavourable environment for bacteria



### Lely Comfort

Provides a dry cubicle bedding

- Does not dry out the teat skin, pH neutral
- Can be used in combination with udder care products
- Specially developed for dairy farming



## 2.4 MONITORING

Animal wellbeing and excellent milk quality are the keys to successful robotic milking. The more information we can retrieve from changes in the milk quality, the easier it is for dairy farmers to identify cows with potential problems. Early detection of udder health infections makes treatment of a cow at an early stage possible, thus preventing serious illnesses.

### Lely Astri Cell

Cell count measuring liquid

- Direct insight in the cell count
- Essential for Milk Quality Control-Cellcount (MQC-C)
- Gives an insight on udder health

Also available as a Lely Astri Cell starter kit consisting of six bottles of 1 L Lely Astri Cell and one mixing can.



## The Milk Quality Control-Cellcount (MQC-C)

To reduce the cost of mastitis on your farm and improve cow health it is important that you have the tools to detect an early bacterial infection. With the MQC-C (Milk Quality Control – Cellcount) you are able to get in control. The MQC-C offers a unique, automated and smart way to keep track of the cell count of all your individual dairy cows.

The MQC-C determines a cell count indication by an accurate viscosity measurement of a milk sample mixed with reagent. These results are displayed in Horizon. When a cow has a high cell count indication, an automatic attention is generated in the Health Report. With this early attention an efficient treatment can be performed and a successful recovery for your cows.



### Farm results

Based on experience of Lely farmers world wide

- up to 6 days earlier attention
- average of 1 day earlier treatment
- faster recovery period
- more successful treatments per year



## 2.5 CALF HEALTH

Calf health deserves attention and time. The better the start a calf has, the greater the chance of having a healthy mature dairy cow. Thanks to thorough cleaning and rinsing by efficient means several times a day, the growth of bacteria is limited. A cleaner system ensures better milk quality and healthier calves.



### Lely Calm Lin

Alkaline non-chlorinated detergent for the calf feeder

- To be used in Interval cleaning and supportive to Lely Calm Cid
- Alkaline non-chlorinated detergent for the Lely Calm
- Effective penetration and removal of fat, protein and sugar residues from feed
- High water hardness stabilization and sophisticated scale prevention and powerful despite cleaning with limited volumes



### Lely Calm Cid

Acid detergent for the calf feeder

- To be used in Interval cleaning and supportive to Lely Calm Lin
- Acid detergent for the Lely Calm
- Effective penetration and removal of scale, lime, iron deposits and milk stone
- Powerful dirt dispersing properties enabling to clean with limited volumes

### Lely Calm body warmer

Keeps the body temperature stable

- The calf body warmer is a waistcoat for young cattle
- Keeps the body temperature stable and reduces energy loss of calves
- Easy handling and can be machine-washed



### Lely Calm concentrate feeder

- The concentrate feeder for calves easily regulates stock feeding
- Easy to set up
- Keeps concentrates fresh and tasty



## 2.6 BIOSECURITY

Hygienic working prevents the spread of contagious animal diseases and promotes good animal health.

### Single use coverall



### Cover boots





# 100% uptime with your Lely

Whether you own an Lely Astronaut, Lely Juno, Lely Vector or, for instance, a Lely Discovery; these robots deserve proper maintenance. Not only because they are most likely the hardest working 'employees' on your dairy farm, but more importantly because they are a long term investment and require the best care. So you aim for both 100% uptime and a long lifespan. Lely would like to support you in this. We offer products to clean both the outside and inside of robots, preventing excessive wear and tear.



## 3. Machine Care

### 3.1 FOAM CONCEPT

Hygiene plays an important role on a dairy farm. It influences animal health, the quality of the milk, the operation and lifespan of the machines. However, not everything that looks clean, is clean. And each type of dirt requires a different approach. Dirt of animal or vegetable origin – fats, sugar, and protein – doesn't just go away by cleaning with water. It also depends on the surface the dirt adheres to. Therefore, Lely developed the Foam concept with safe detergents for a clean working environment.



### Lely Robotics Foam

Foam cleaner for Lely equipment

- Long cling with the dynamics of foam
- Suitable for wide range of areas in the dairy farm
- Well balanced between cleaning performance and material compatibility



### Lely Barn Foam

Foam cleaner for the barn environment

- Long cling with the dynamics of foam
- Suitable for areas contaminated with inorganic dirt
- Formulation is phosphate- and nitrogen-free

### Lely Foam unit

Compact low-pressure system for foam cleaners

- Easily installed
- Compact and light to use
- Use alkaline detergents and slightly acidic detergents based on phosphoric acid
- The Lely Foam unit is a low-pressure cleaner that only uses water pressure



*"A clean environment  
creates more peace in  
the barn and contributes  
to an increase  
in job satisfaction."*







### Lely Astri TDS Clean

#### Lens cleaner

- Cleans the Lely Astronaut TDS lens quickly and without streaks
- A clean lens for improved connection attempts of the teat cups for efficient milking
- Scratch resistant



### 3.2 LELY ASTRONAUT MAINTENANCE

For the daily maintenance of the milking robot, Lely delivers all components you can easily replace yourself.

#### Lely Vacuum Pump Clean

Cleaning detergent for the vacuum pump

- Cleans the Astronaut vacuum pump automatically
- 100% safe for the robot
- Ensures a long service life for the vacuum pump



#### Lely Astronaut pretreatment brush

For hygiene and stimulation

- Soft for the udder and teats
- Optimal cleaning
- Optimal stimulation for milk let down
- Disinfected after every milking



#### Lely Astronaut silicone milk tube

Milk transport

- High-quality material with a smooth surface
- For quick and hygienic transport of the milk



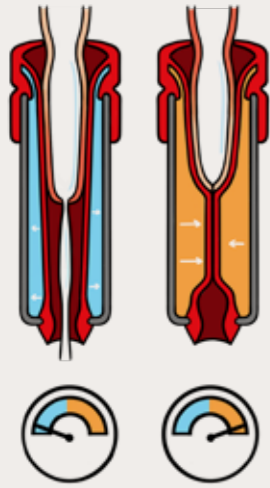
#### Lely Astronaut cord

Pulling in the milk cup to the mothership

- Connects the milk cups to the robot arm
- Easy to use
- Replacing them in time prevents unexpected malfunctions

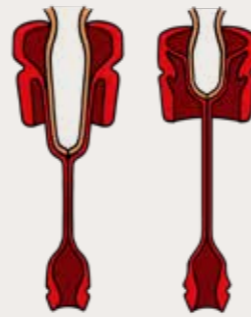


Blue = Vacuum  
Orange = Atmospheric air pressure



**Head**

All Lely teat liners have a compressible and flexible head design to optimally adjust to the udder shape and teat orientation. The low head design of Lely teat liners has a unique design. It allows the barrel to correctly massage even short teats. A high head is used for teats longer than 75 mm in length. A low head is used for shorter teats.



**Barrel**

The main function of the barrel is to massage the teat-end. When the barrel closes it relieves the teat from congestion which results in a comfortable milking while maintaining speed during milking.



**Mouth piece lip**

The lip without rings allows for better teat penetration into the teat liner and accommodates a larger dimensional variation in teat sizes. Rings on the lip increase the stiffness of the lip resulting in a better seal. A better seal will reduce teat liner slip and sucking of air, but can cause crawling of the teat liner.



**Silicone vs. rubber**

Food grade material is used for both the Lely silicone and rubber teat liners. Silicone is food-safe by design and is also the most durable option. Silicone teat liners have a lifetime up to 10.000 cow milkings where Rubber teat liners have 2.500.

	Silicone	Rubber
Speed	+	++
Durability	++	+
Gentleness	++	+

**Essential link**

Teat liners are the main interface between the Lely Astronaut and the cow. It is of utmost importance to select a fitting teat liner for your herd to reach optimal milking performance. That is why Lely offers a broad range of different types of silicone teat liners and rubber variants.

**Designed for the Astronaut**

We know the Astronaut like no one else. Therefore, Lely teat liners are especially designed to work for both the cow and the milking robot. They are engineered from high quality materials and guarantee a consistent, controlled, and harmonious interaction between your cows and the Astronaut.

Teat liner types <sup>1</sup>	Material	Mouth piece opening	Rings	Head size	Shell type <sup>3</sup>
S18	Silicone	18 mm	Yes	Low	B
S19	Silicone	19 mm	Yes	Low	B
S21	Silicone	21 mm	Yes	Low	B
S21 soft	Silicone	21 mm	No	Low	B
M21 soft	Silicone	21 mm	No	High	A
M21	Silicone	21 mm	Yes	High	A
M22	Silicone	22 mm	Yes	High	A
M23	Silicone	23 mm	Yes	High	A
Rubber teat liner	Nitril Rubber	21 mm	No	Low	C
US Rubber teat liner <sup>2</sup>	Rubber US	21 mm	No	Low	A

<sup>1</sup> Not for A2

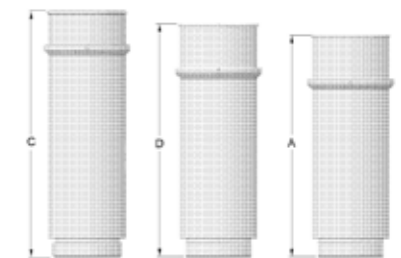
<sup>2</sup> US only

<sup>3</sup> every teat liner type has its specific shell for optimal performance

**Lely teat shells**

Special teat cups for all the Lely teat liners

- Ensure you use the correct teat shell with the selected Lely teat liner





## Lely Astronaut twin tube cover

### Protective covers

- Duplo tubes for the Astronaut A3, A4 and A5 milking robots
- Protects the Duplo tubes against getting entangled and damaged
- Comprehensive protection for a longer life span



## Lely Astronaut pulsation tube

### Supports the milking movement of the teat liner

- Pulsation tube (25 m) for the Lely Astronaut milking robot
- Supports the milking movement pulsation phases of the teat liner
- Timely replacement prevents unnecessary malfunctions



## Lely Astronaut toolbox

### Handy tools for easy minor maintenance

Contains over 30 items, including: Sleeve cartridge, bleed hole needle, milking cup cords, hoses, hose scissors and clamps, brushes.

## Lely Consumable box

### Composite box for the most relevant wearing parts

Contains: 24 silicone teat liners (6 sets), 500 tube filters (120 g), 4 cup cords (3 m), 4 brushes (2 sets), 1 set of 4 silicone duplo hoses.



## 3.3 LELY DISCOVERY MAINTENANCE

The maintenance of the Lely Discovery mobile manure scraper consists of changing the silicone strip at the bottom of the Lely Discovery that pushes the manure through the openings of the floor grids. This flexible strip should be replaced about twice a year, or if it is damaged, and can easily be done by you.

## Lely Discovery Strip

### Flexible strip for the Lely Discovery manure scraper

- Flexible strip for the Lely Discovery barn cleaner
- The rubber strip pushes the manure through the floor/slat openings
- Replacement twice a year





### 3.4 LELY CALM MAINTENANCE

For the daily maintenance of the Calm, Lely delivers all components. You can easily replace these yourself. Replacement of teats and tubes is recommended on a regular basis, before excessive wear and tear appears.

#### Lely Calm tube

Quality tube for the Lely Calm feeder

- Length 2,5 m
- Specially designed for the Lely Calm



#### Lely Calm teat

Quality teat for the Lely Calm feeder

- Pack of 10
- Specially designed for the Lely Calm
- Replace once a month, depending on use and visible wear



"We have been working with the Lely Calm for about a year and a half now and see that the calves like to walk into the calf feeder. They drink more milk than when we gave around 5 litres of milk by hand twice a day. As a result, the development of the calves has improved considerably during the milking period. In addition, we prevent a weaning dip by reducing the amount of milk very smoothly."

**Roy Pelgrim**  
Etten, The Netherlands



## Optimal care accomplishes optimal results

Caring for your machines, your cows and your milk. Lely gladly supports you in this with a comprehensive portfolio of consumable products and original wear parts, dedicated to these three care responsibilities. Because only with the right tools combined with the right maintenance can you expect optimal results.



### 4. We also have



Hand truck for 60 kg drum



Can / drum key

### Mixing can for Lely Astri Cell

- Prepare Astri-Cell for use



### Lely filter dispenser



### Lely Walk Liquid

- To be used as a spray or in hoof baths
- Lely Walk-Liquid (21 kg) for hoof cleaning, disinfection and care
- Contains quaternary ammonium cations (QAC'S), glutaric aldehyde and aluminium sulphate







*Contact your local Lely Center  
for more information.*

*Bright farming is yours by choice*





Lely, Astronaut, Astri, Atlantis, C4C, Calm, Caltive, Capsule, Commodus, Compedes, Cosmix, Dairywise, Discovery, F4C, Graviton, Grazeway, Hubble, I-flow, InHerd, Juno, L4C, Lely Center, Lelywash, Luna, Nautilus, Orbiter, Quaress, Qwes, Shuttle, T4C, Vector, Viseo, Voyager and Walkway are registered trademarks of the Lely Group.

Lely reserves all rights with respect to its trademarks. Any unauthorised use of any Lely-owned trademark or any use of a trademark that is confusingly similar to, or likely to cause confusion with a Lely-owned trademark, would constitute infringement of Lely's exclusive rights. All rights reserved. The information given in this publication is provided for information purposes only and does not constitute an offer for sale. Certain products may not be available in individual countries and products supplied may differ from those illustrated. No part of this publication may be copied or published by means of printing, photocopying, microfilm or any other process whatsoever without prior permission, in writing, from Lely Holding S.à r.l. Although the contents of this publication have been compiled with the greatest possible care, Lely cannot accept liability for any damage that might arise from errors or omissions in this publication.

